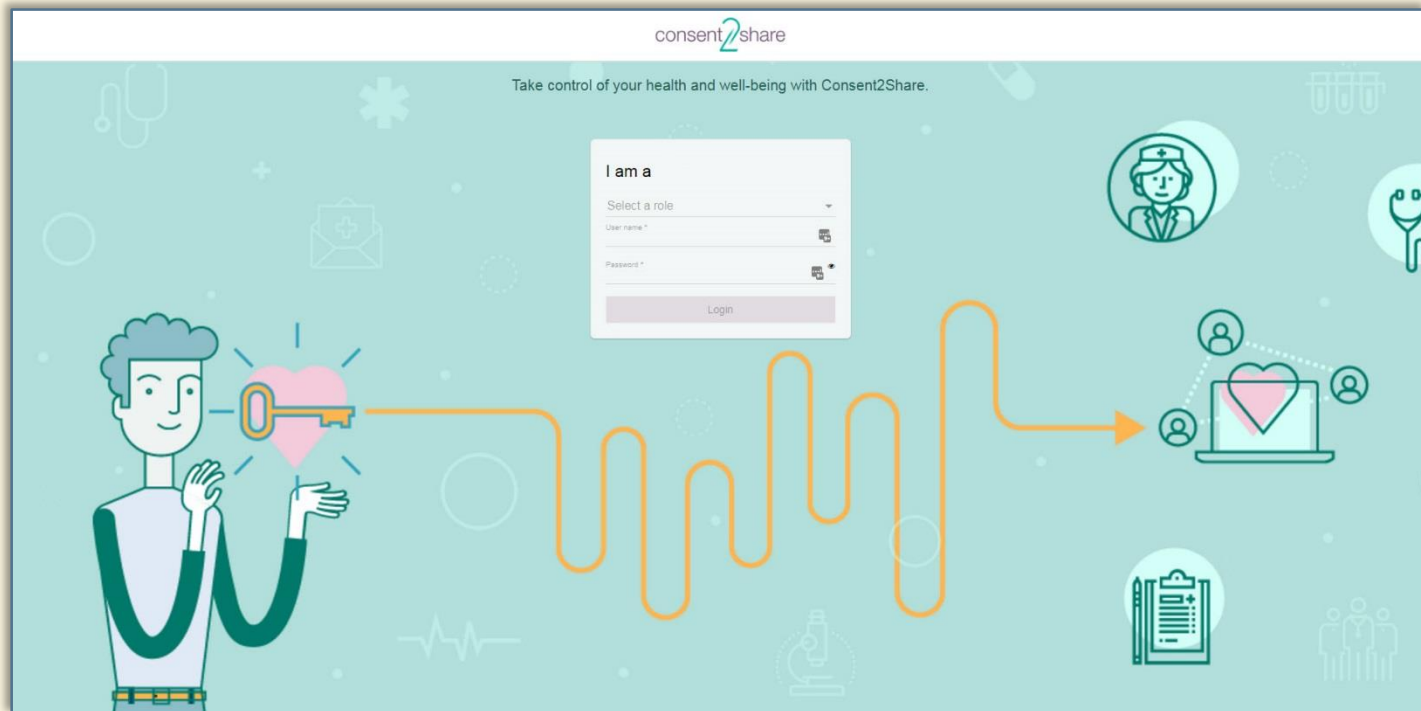
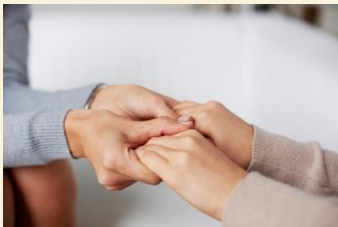



Consent2Share V3.4.0 Master User Guide



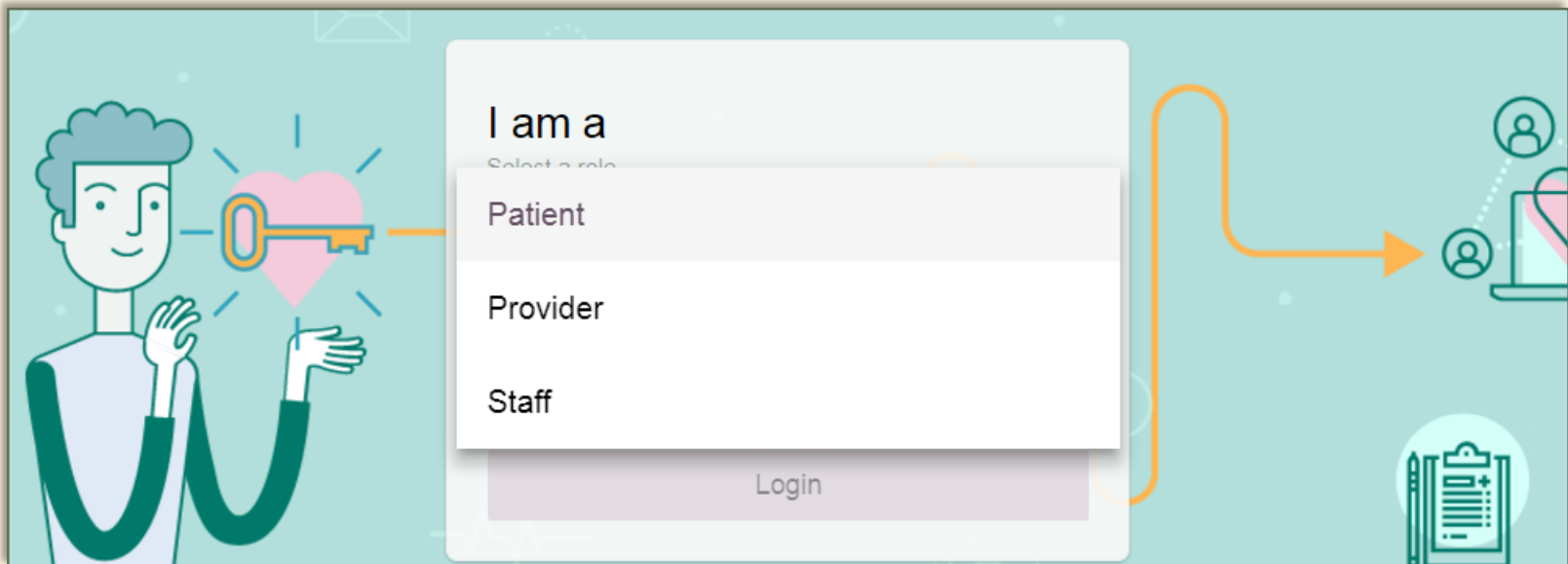
About Consent2Share



- A secure website that provides patients with 24-hour access to their personal health record
- Accessible anywhere using an internet connection
- Puts patients in charge of their own health information
- Allows patients to share your health records with providers
- Allows patients to choose what they wish to share
- Allows patients to provide electronic consent for their choices
- Allows patients to choose between English and Spanish translations

Master User Interface

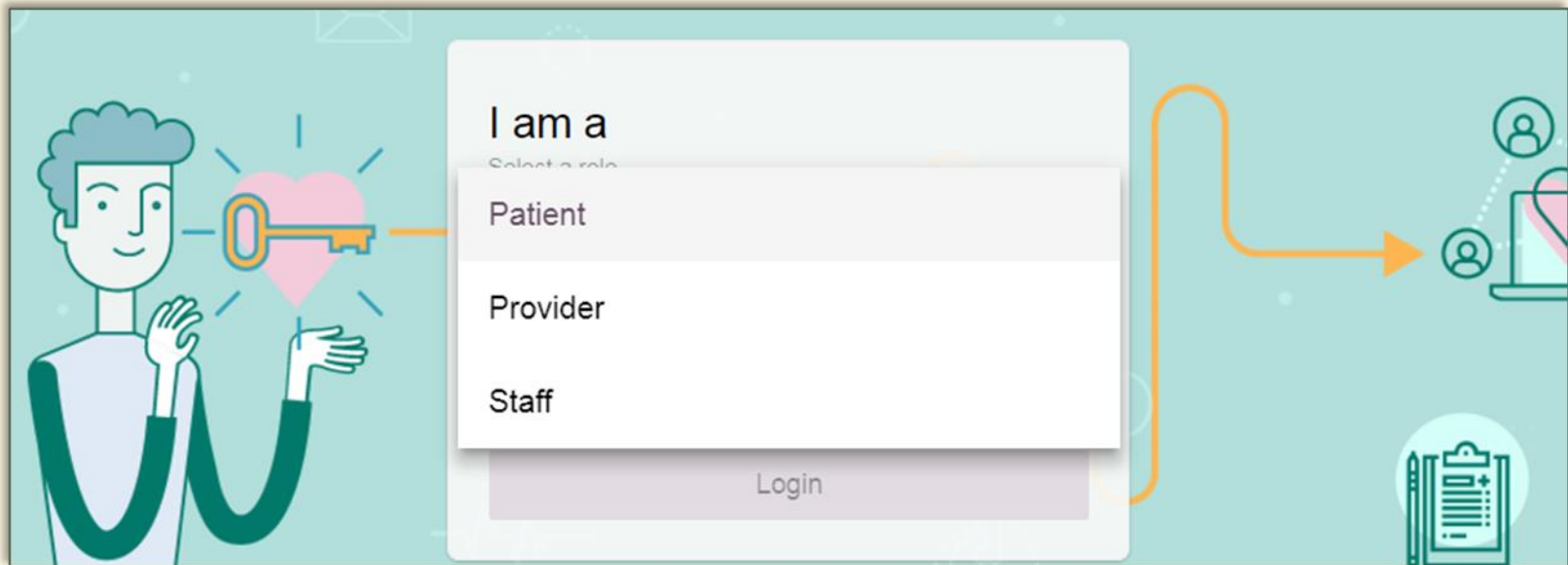
- The Master User Interface (UI) allows users to have a single login user interface for all Consent2Share roles and users
- <https://c2sqa.consent2share.com/master-ui/login>
- The Master UI redirects Consent2Share users to a Master UI



About This Master User Guide

This Master User Guide will show you how to:

1. Log in with a Patient Account
2. Log in with a Provider Account
3. Log in with a Staff/Admin Account



Go to the Master UI Portal

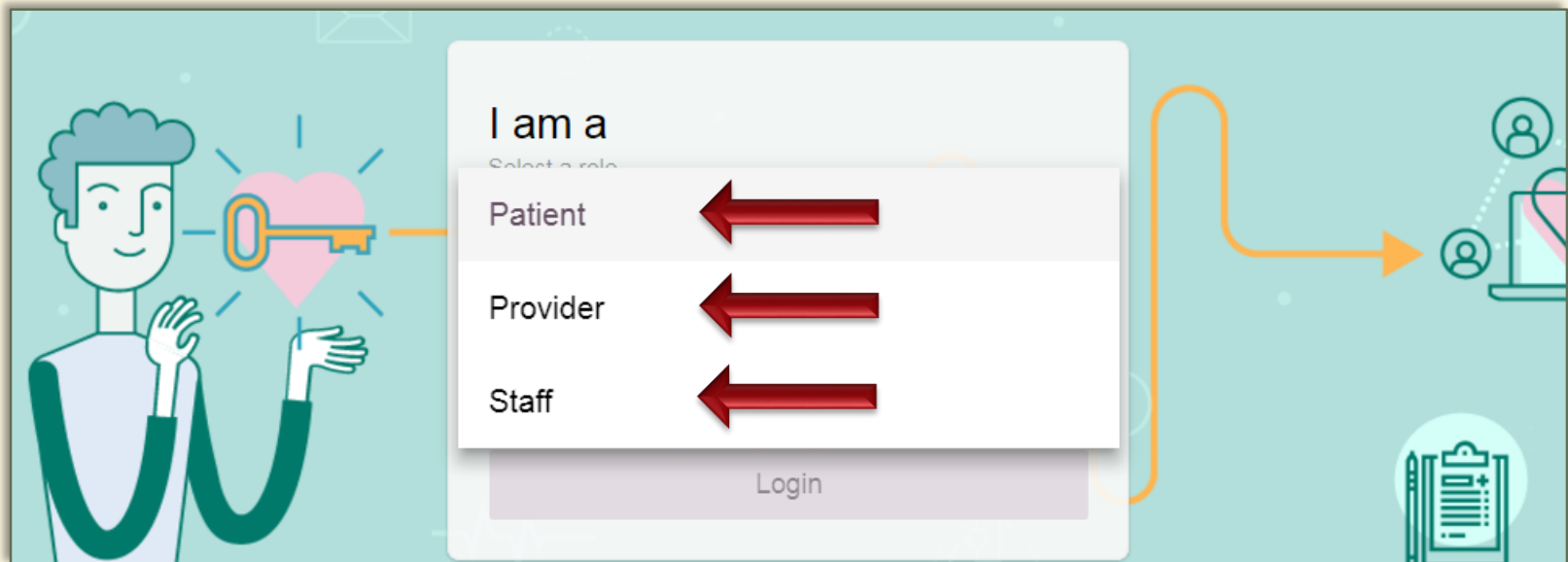
- Go to the Consent2Share Master Portal UI
- Notice the Select a Role Dropdown Menu



View the Select a Role Drop-down Menu

From the Select a Role Dropdown Menu, you can select

- ✓ Patient
- ✓ Provider
- ✓ Staff



Section 1: Log in with a Patient Account

- Go to the Consent2Share Master Portal
- From the Select a Role Dropdown Menu, select Patient
- When you log in as a patient, the Patient Home Page opens



consent2share

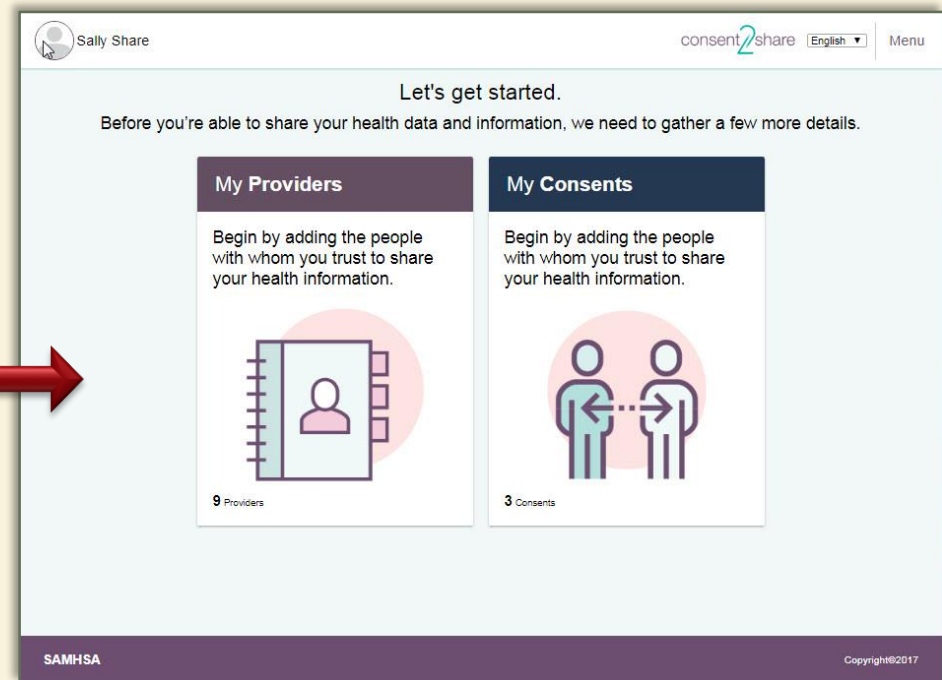
Take control of your health and well-being with Consent2Share.

I am a
Select a role
Patient

User name *

Password *

Login



Sally Share

consent2share English Menu

Let's get started.

Before you're able to share your health data and information, we need to gather a few more details.

My Providers

Begin by adding the people with whom you trust to share your health information.

9 Providers

My Consents

Begin by adding the people with whom you trust to share your health information.

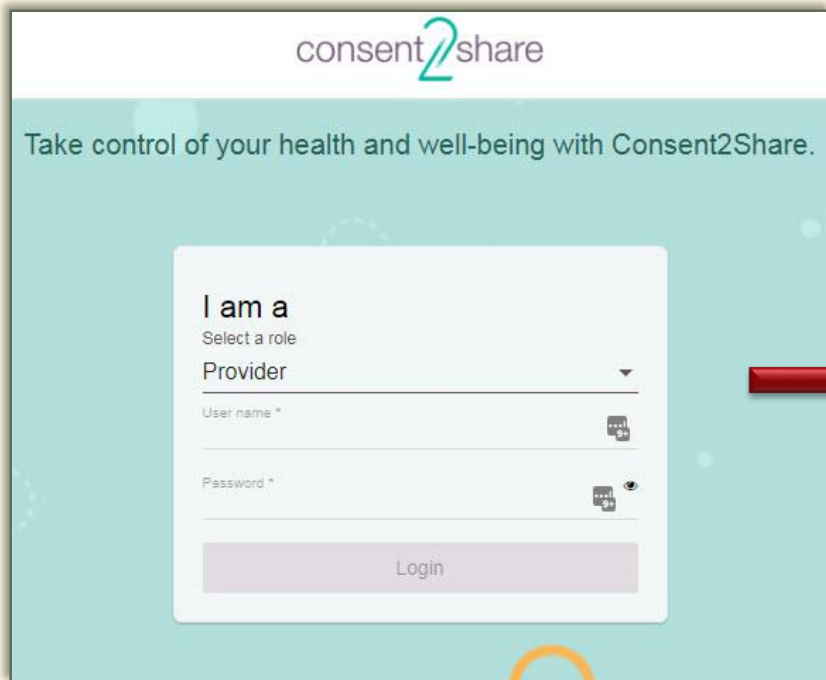
3 Consents

SAMHSA

Copyright©2017

Section 2: Log in with a Provider Account

- Go to the Consent2Share Master Portal
- From the Select a Role Dropdown Menu, select Provider
- When you log in as a provider, the Provider Home Page opens



consent2share

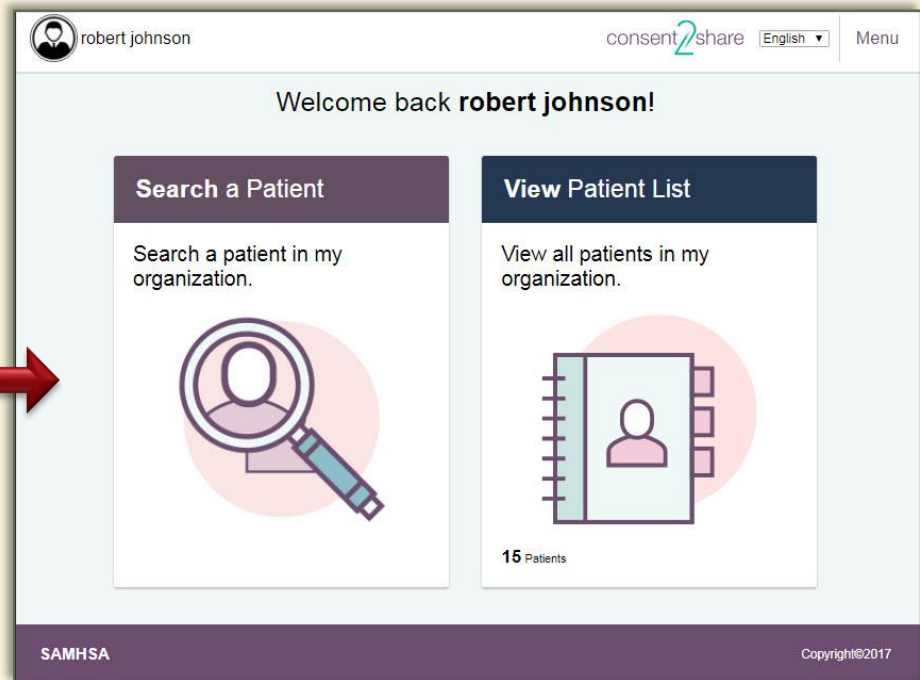
Take control of your health and well-being with Consent2Share.

I am a
Select a role
Provider

User name *

Password *

Login



robert johnson

consent2share English Menu

Welcome back **robert johnson!**

Search a Patient
Search a patient in my organization.

View Patient List
View all patients in my organization.

15 Patients

SAMHSA Copyright©2017

Section 3: Log in with a Staff Account

- Go to the Consent2Share Master Portal
- From the Select a Role Dropdown Menu, select Staff
- When you log in as Staff, the Staff Home Page Opens



consent2share

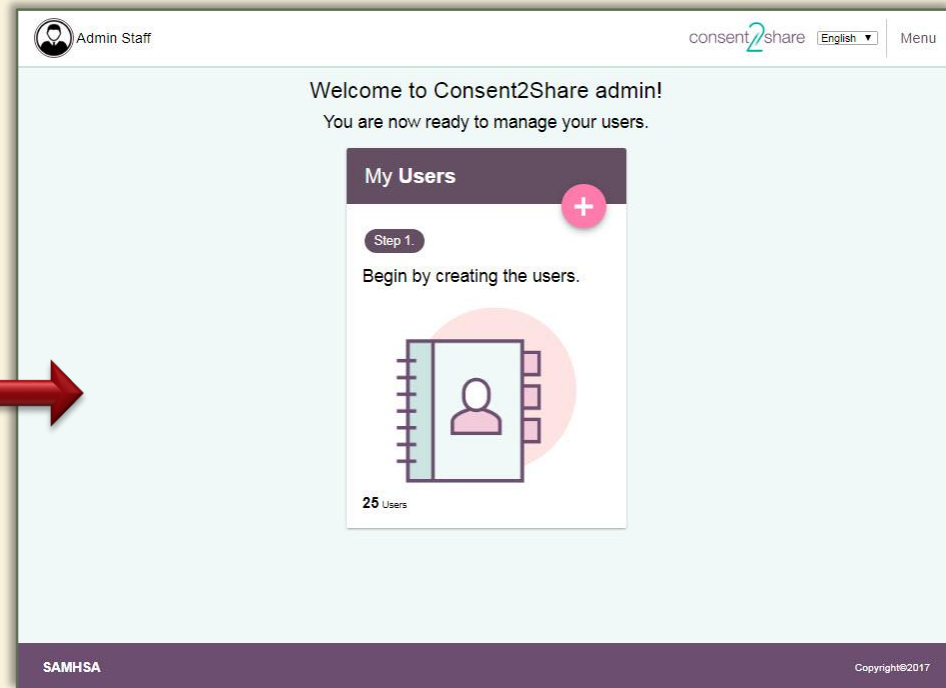
Take control of your health and well-being with Consent2Share.

I am a
Select a role
Staff

User name *

Password *

Login



Admin Staff

consent2share English Menu

Welcome to Consent2Share admin!
You are now ready to manage your users.

My Users +

Step 1.

Begin by creating the users.

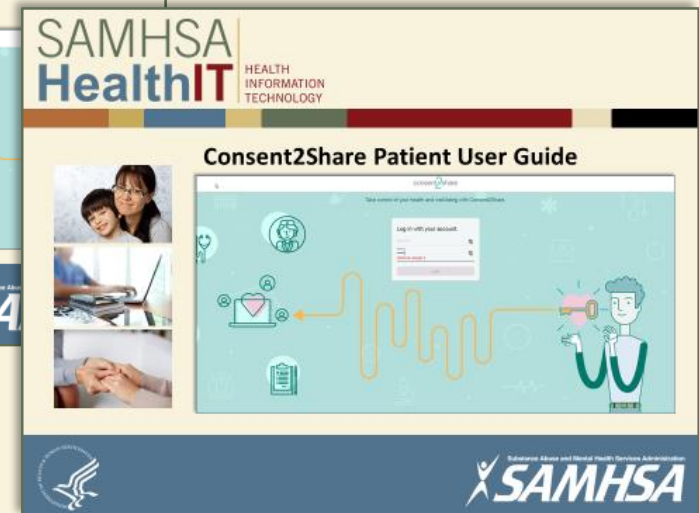
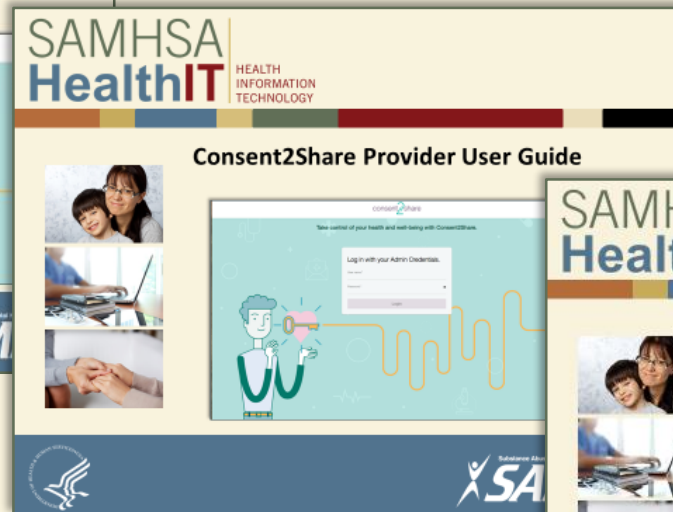
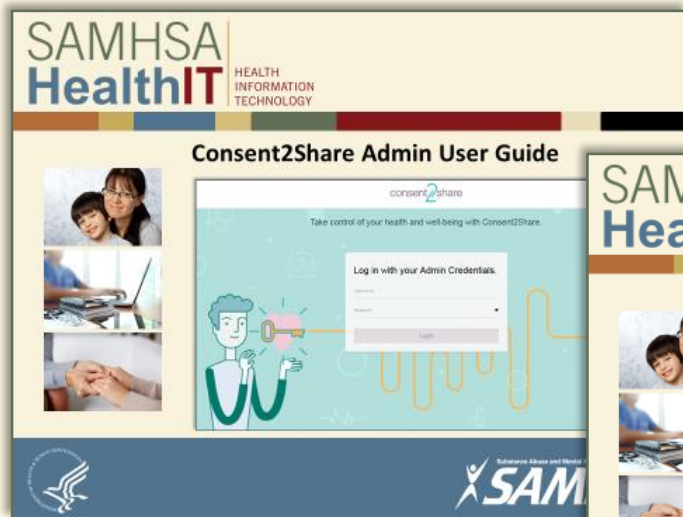
25 Users

SAMHSA

Copyright©2017

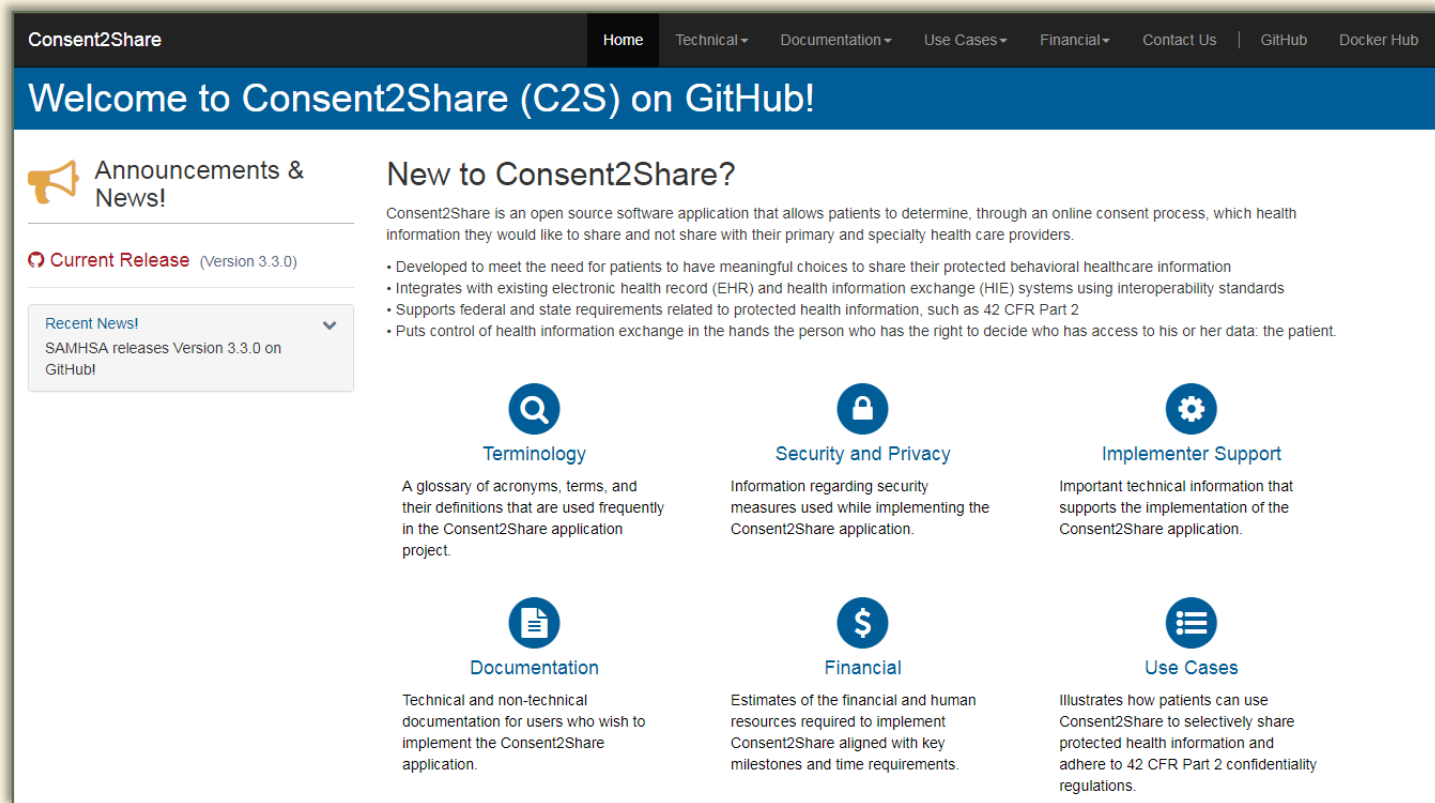
Next Steps: Use Relevant User Guide

Once logged in, follow the workflows described in the Patient User Guide, Provider User Guide, and Staff User Guide as appropriate.



Obtain Guides on GitHub Project Site

- Go to: <https://bhits-dev.github.io/consent2share/index.html>
- Select the Documentation Tab for the relevant User Guide



The screenshot shows the Consent2Share GitHub project site. The navigation bar includes links for Home, Technical, Documentation, Use Cases, Financial, Contact Us, GitHub, and Docker Hub. The main content area features a welcome message and several resource links:

- Announcements & News!**
- Current Release (Version 3.3.0)**
- Recent News!** SAMHSA releases Version 3.3.0 on GitHub!
- New to Consent2Share?**
 - Consent2Share is an open source software application that allows patients to determine, through an online consent process, which health information they would like to share and not share with their primary and specialty health care providers.
 - Developed to meet the need for patients to have meaningful choices to share their protected behavioral healthcare information
 - Integrates with existing electronic health record (EHR) and health information exchange (HIE) systems using interoperability standards
 - Supports federal and state requirements related to protected health information, such as 42 CFR Part 2
 - Puts control of health information exchange in the hands the person who has the right to decide who has access to his or her data: the patient.
- Terminology**: A glossary of acronyms, terms, and their definitions that are used frequently in the Consent2Share application project.
- Security and Privacy**: Information regarding security measures used while implementing the Consent2Share application.
- Implementer Support**: Important technical information that supports the implementation of the Consent2Share application.
- Documentation**: Technical and non-technical documentation for users who wish to implement the Consent2Share application.
- Financial**: Estimates of the financial and human resources required to implement Consent2Share aligned with key milestones and time requirements.
- Use Cases**: Illustrates how patients can use Consent2Share to selectively share protected health information and adhere to 42 CFR Part 2 confidentiality regulations.